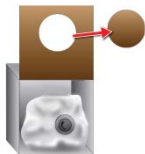


## Usage Instructions

### Excelsior® HE Laundry Detergent

- 1) Open the detergent box and remove the perforated portion of cardboard from the top of the box.



- 2) Then pull detergent spout through cut out area.



- 3) Place the enclosed measuring cup under the dispensing faucet. To dispense detergent, turn knob on faucet counter clockwise.



- 4) Turn knob clockwise until “click” is felt to stop dispensing.

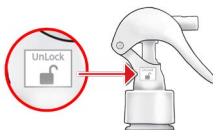


- 5) Applies to 5L and 3L laundry detergent: For High Efficiency washers, use 15ml (1 Tbsp) of detergent per laundry load. For regular washers, use 30ml (2 Tbsp) of detergent per load. Follow manufacturer's washing instructions for water temperature.



### Excelsior® HE Stain Remover

- 1) Prior to stain treatment, ensure that Stain Remover sprayer has been unlocked. To unlock, press the unlock button located on the neck of the bottle.



- 2) Apply 2 sprays directly onto stains and surrounding area. For maximum results, spray the stain both outside and underneath on the inside of the garment.



- 3) Allow the stain remover to work and soak into the stain for 5 minutes or more.



- 4) Place into the regular wash with detergent; for best results use our Excelsior® HE Laundry Detergent.

